

The background of the image shows a large industrial water treatment facility. A worker in a hard hat and safety vest stands on a yellow metal walkway overlooking a large circular tank. The tank is filled with water and has a large red mechanical structure mounted on top. The facility has a high ceiling with blue pipes and fluorescent lighting. Large windows in the background show a view of trees outside.

EPCOR Water Services

**2025 ARHCA
Building Tomorrow
Construction Summit
January 14, 2025**

Agenda

- Overview of EPCOR
- Overview of EPCOR Water Services (EWS)
- EWS Org Structure
- EWS Capital Budget
- Procurement





catchbasins
64,038

22,757
fire hydrants



Wastewater
Treatment
Plant

1



288ML
of wastewater
treated daily

108,650
Manholes

3,432KM
of sanitary
pipes

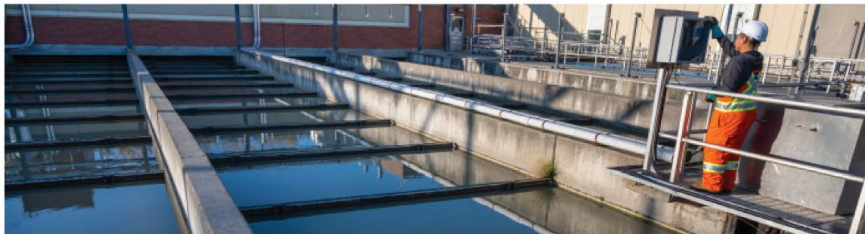
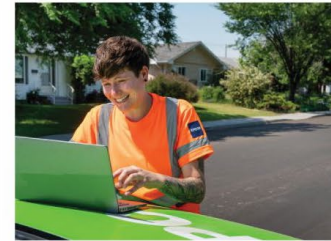
2

Water
Treatment
Plants

4,291KM
of water
main lines

service connections

272,467 water
247,139 wastewater
181,920 stormwater

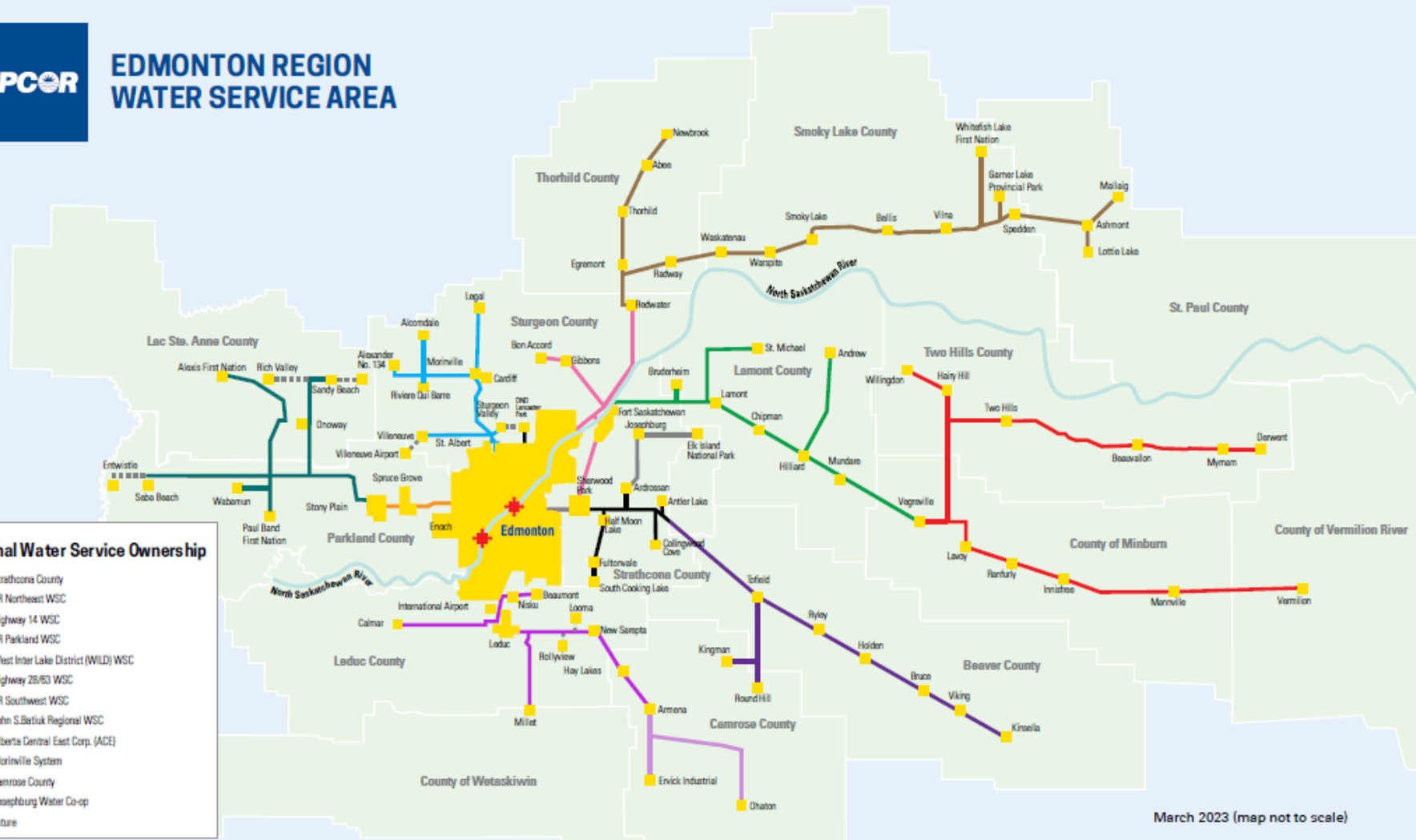


330
Stormwater
Management Facilities

375ML
water treated
daily

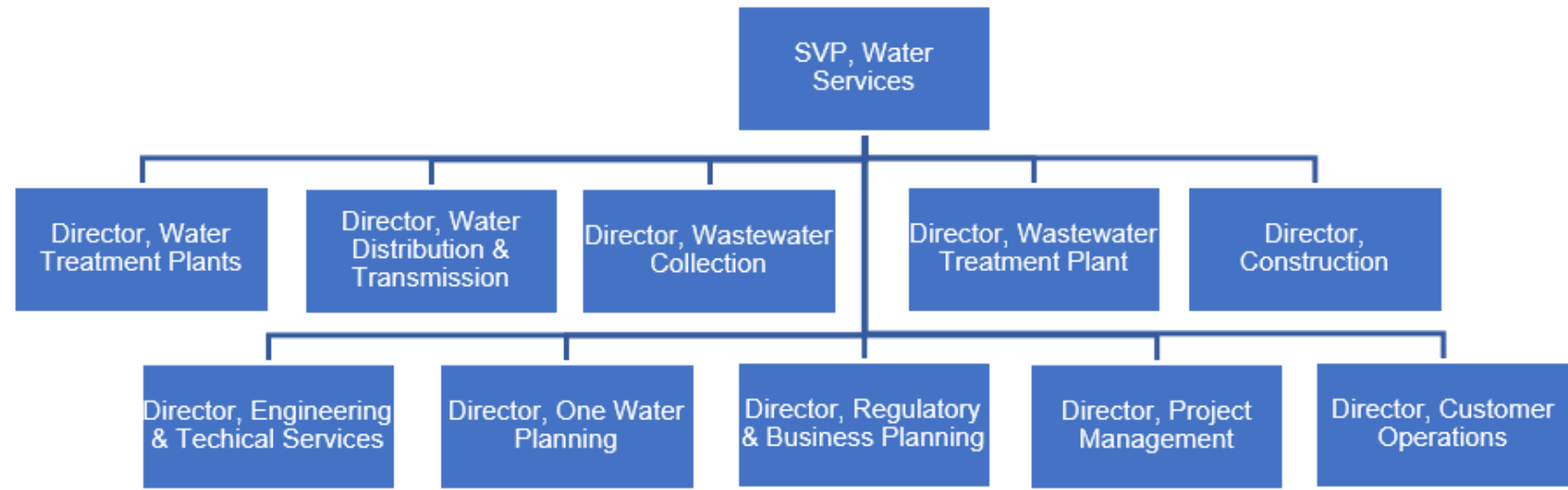
Regional Water Service Ownership

- Strathcona County
- CR Northeast WSC
- Highway 14 WSC
- CR Parkland WSC
- West Inter Lake District (WILD) WSC
- Highway 26/63 WSC
- CR Southwest WSC
- John S. Bertuk Regional WSC
- Alberta Central East Corp. (ACE)
- Morinville System
- Camrose County
- Josephburg Water Co-op
- ▬▬▬ Future

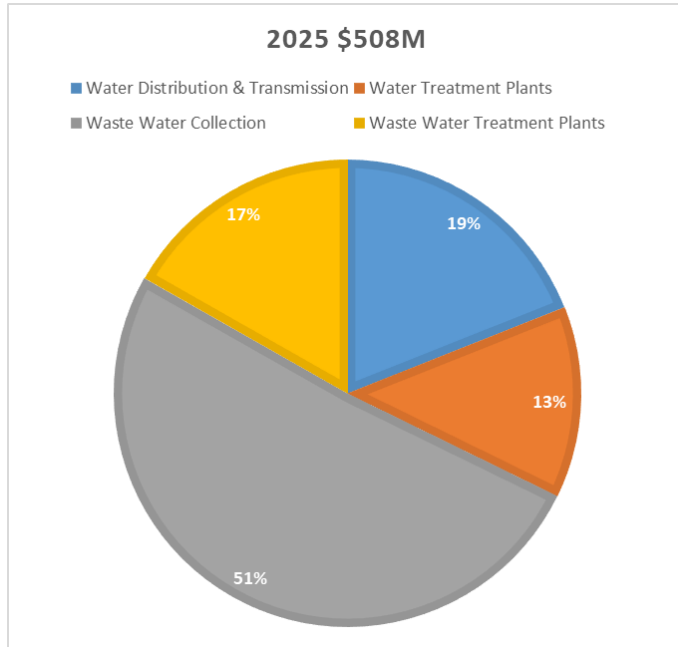




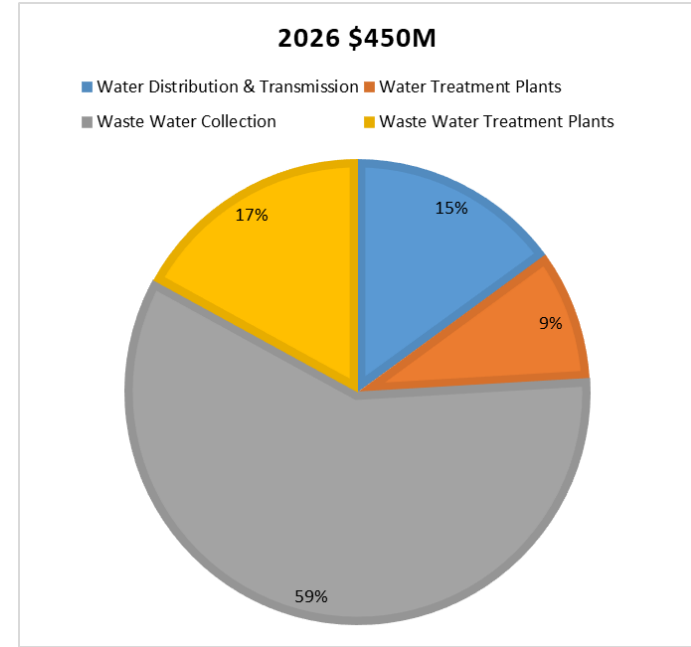
EPCOR Water Services Leadership



EPCOR Water Services Capital Budget

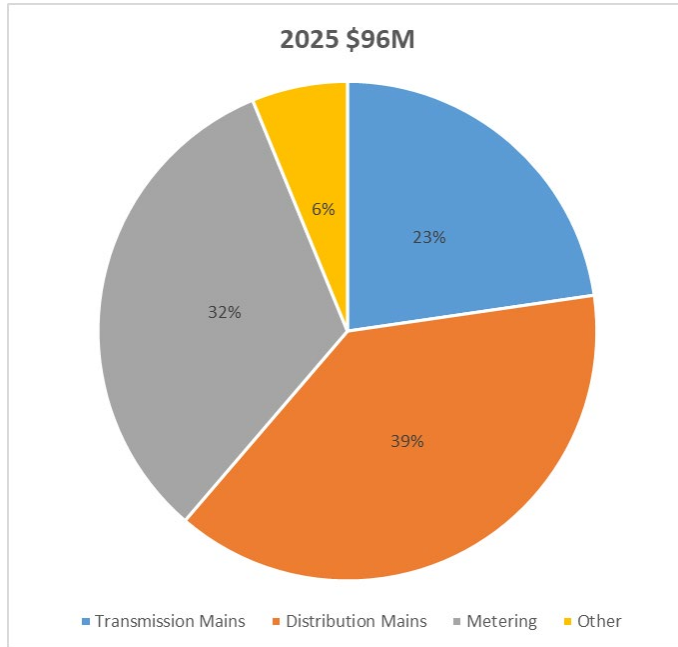


2025 \$508 Million

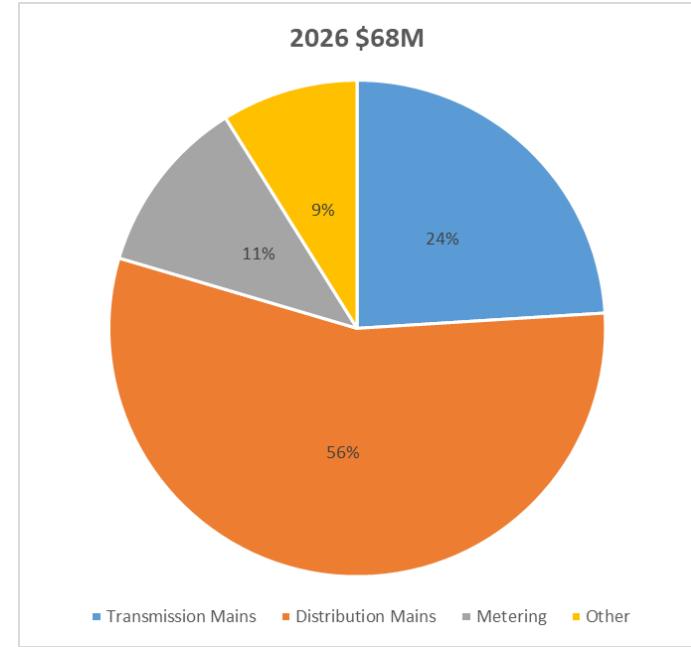


2026 \$450 Million

EPCOR Water Distribution & Transmission

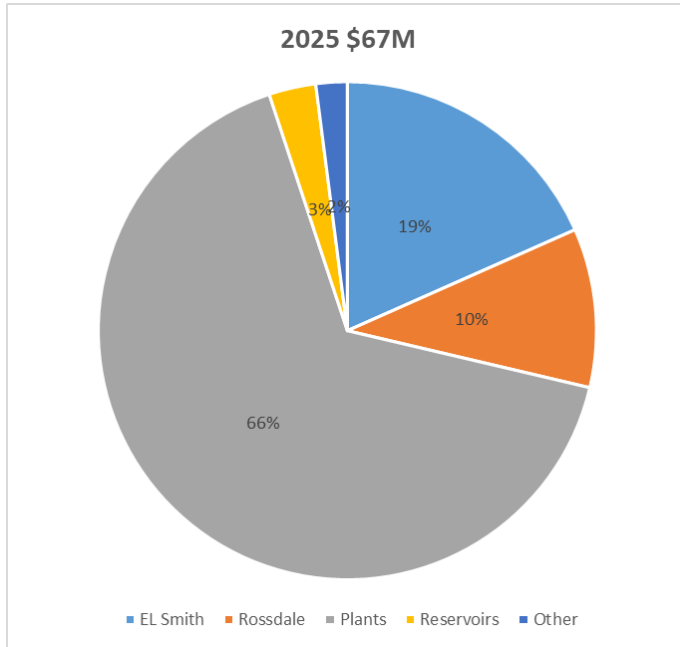


2025 \$96 Million

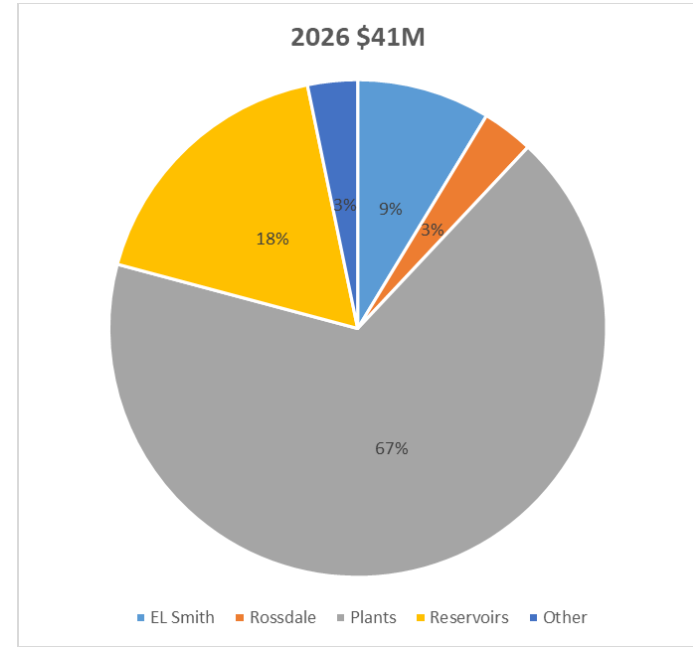


2026 \$68 Million

EPCOR Water Treatment Plants

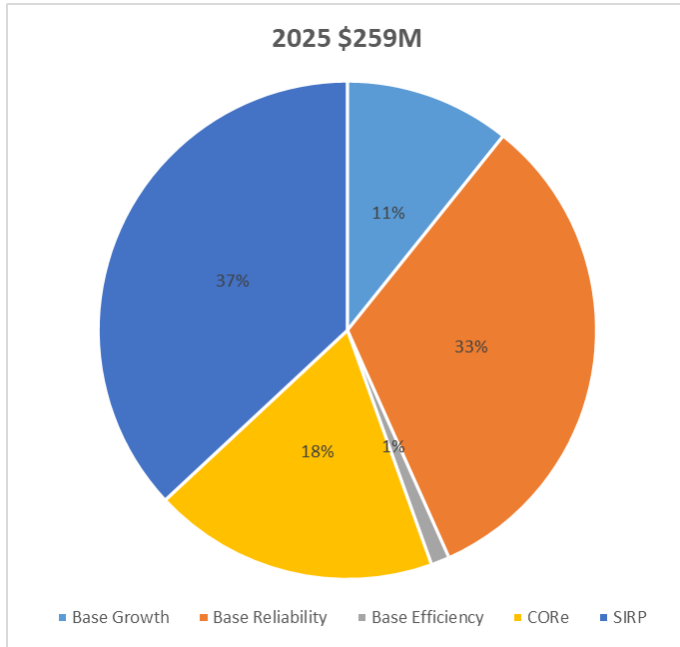


2025 \$67 Million

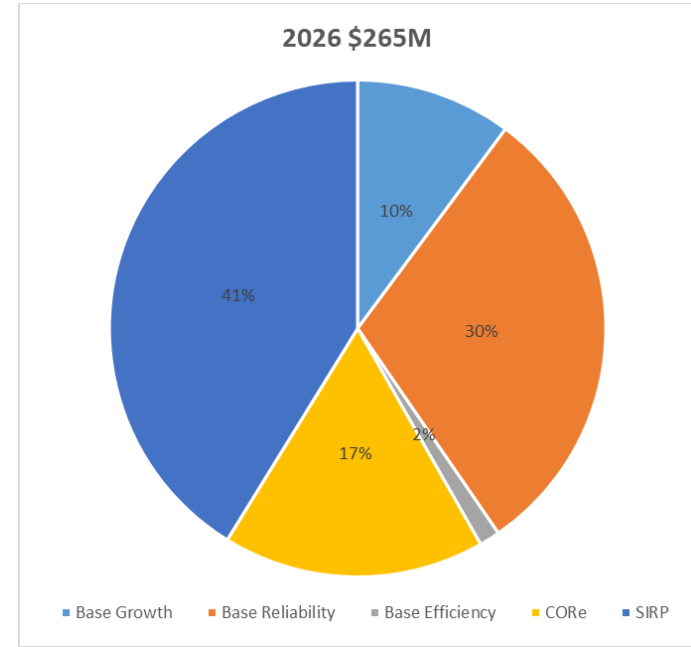


2026 \$41 Million

EPCOR Waste Water Collection



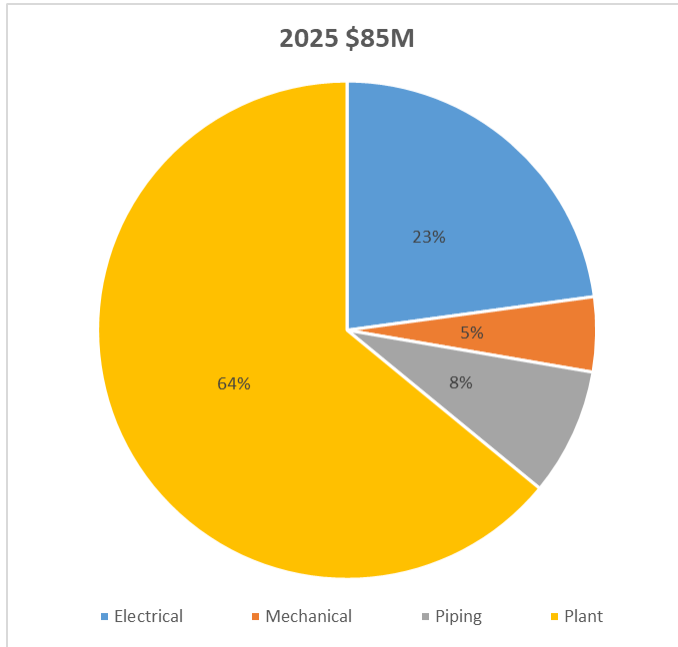
2025 \$259 Million



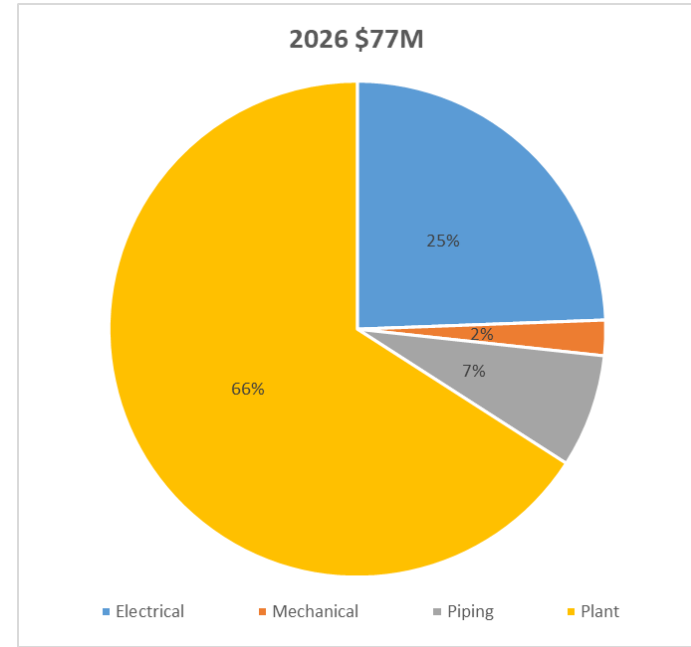
2026 \$265 Million



EPCOR Waste Water Treatment Plant



2025 \$85 Million



2026 \$77 Million

Procurement

- Combination of multi-year MSA's and individual tenders
- All tenders for new MSA's and tenders go through Bids & Tenders
- We have an Indigenous Procurement Strategy



A large green rectangular box with a white border is positioned in the center-left of the image. Inside the box, the word "Questions?" is written in a white, sans-serif font. A thin white horizontal line is located below the text.

Questions?

The label on the beer bottle in the foreground is partially visible. It features the text "THE SASK" in a large, bold, sans-serif font. Below this, in a smaller font, it says "MADE IN EDMONTON BY EPCOR". There is also a stylized logo on the label.The label on the beer bottle in the background is partially visible. It features the text "GLASS OF" in a large, bold, sans-serif font. Below this, in a smaller font, it says "PRECISELY BREWED". There is also a stylized logo on the label.