

2025 Capital Projects



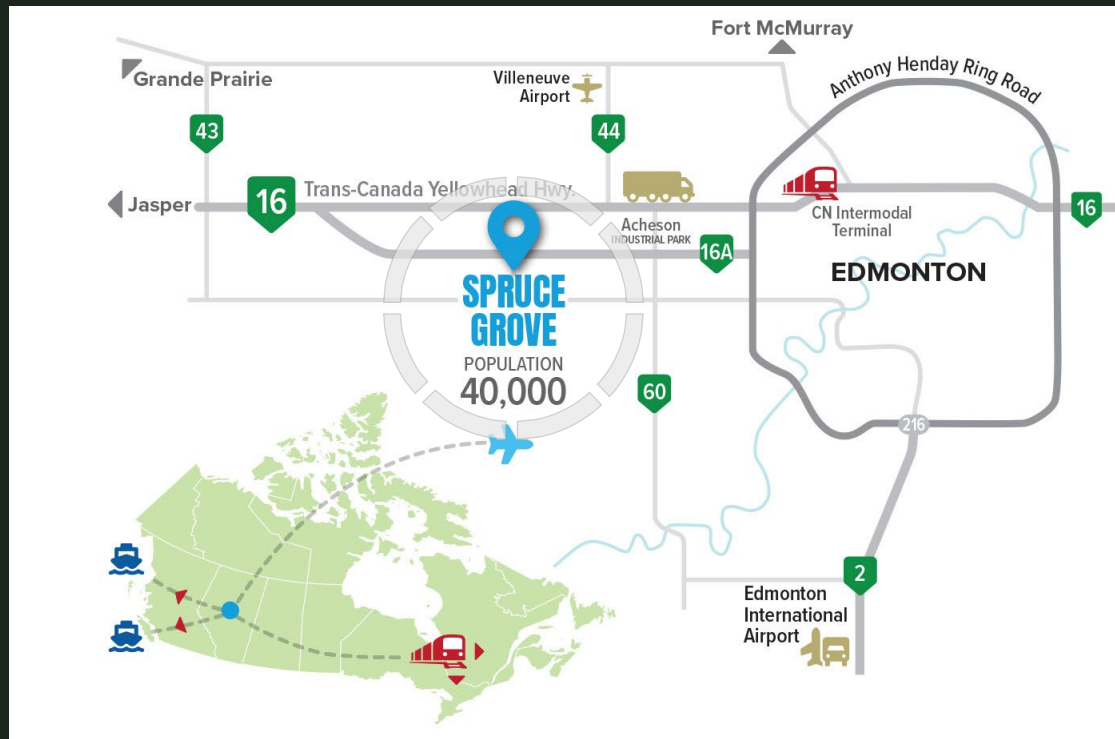
Alberta Roadbuilders & Heavy
Construction Association
Presentation



 The City of
SPRUCE GROVE

Trevor Crawford

**Manager of Capital Projects
Engineering Department**



About the City

Spruce Grove is located 11 kms west of Edmonton, shares a boundary with the Town of Stony Plain to the west and is surrounded by Parkland County.

Spruce Grove has emerged as a regional commercial centre and industrial base and is home to numerous Industrial Subdivisions which employ an estimated 2,200 people.

With a population nearing 40,000 people, the City is currently Alberta's 9th largest city.

List of projects

Boundary Road – New Growth Infrastructure

First Avenue Lane – Watermain and Sanitary Sewer Rehabilitation

Madison Crescent – Surface Rehabilitation

Mohr Avenue – Surface Rehabilitation

Grove Meadows – Pressure Reducing Valves (PRV) Installation

Fieldstone and Heatherglen Lanes – Surface Rehabilitation



Fieldstone and Heatherglen Lanes

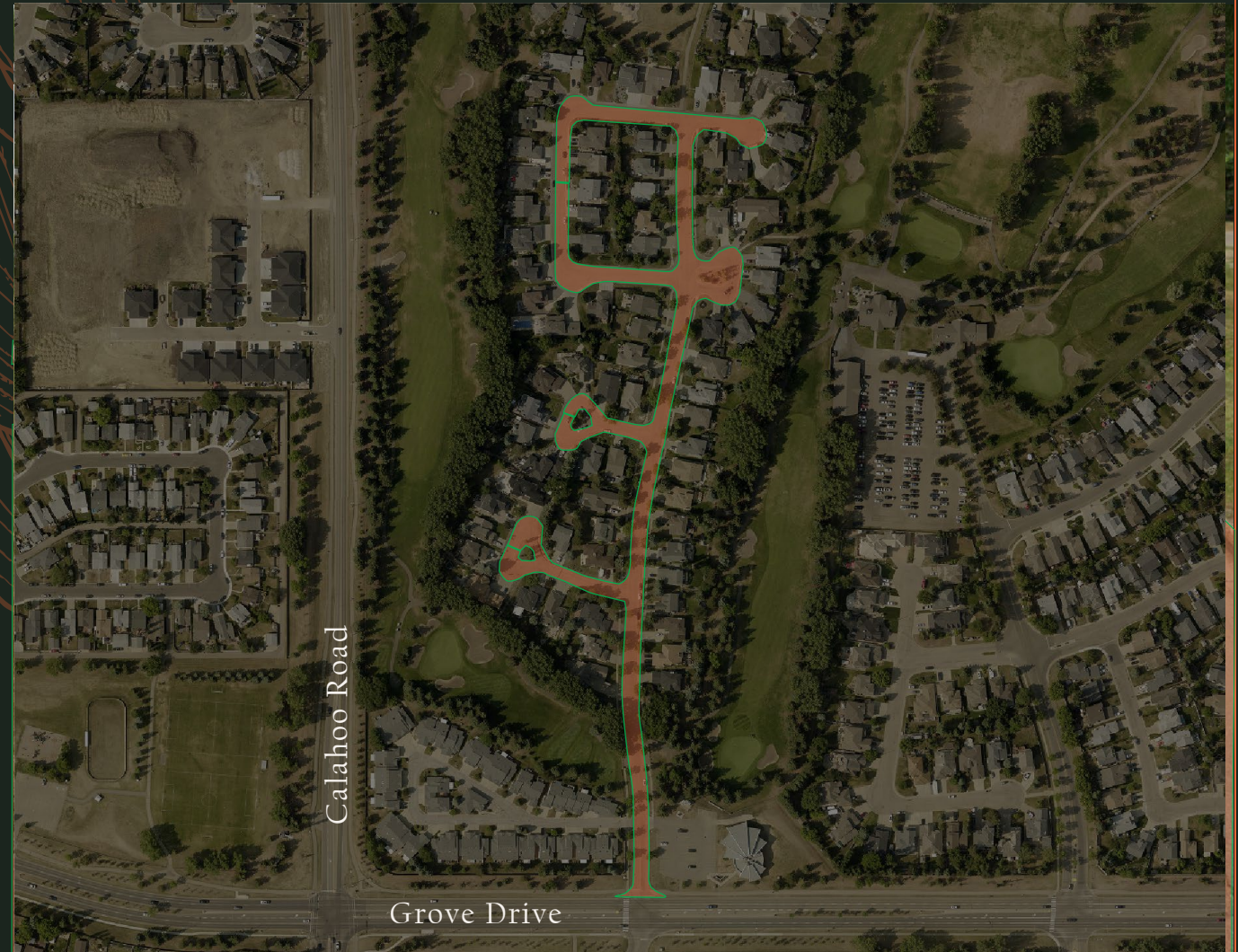
Full Depth Recycling (pulverization)

Mill and Overlay

Concrete Replacement

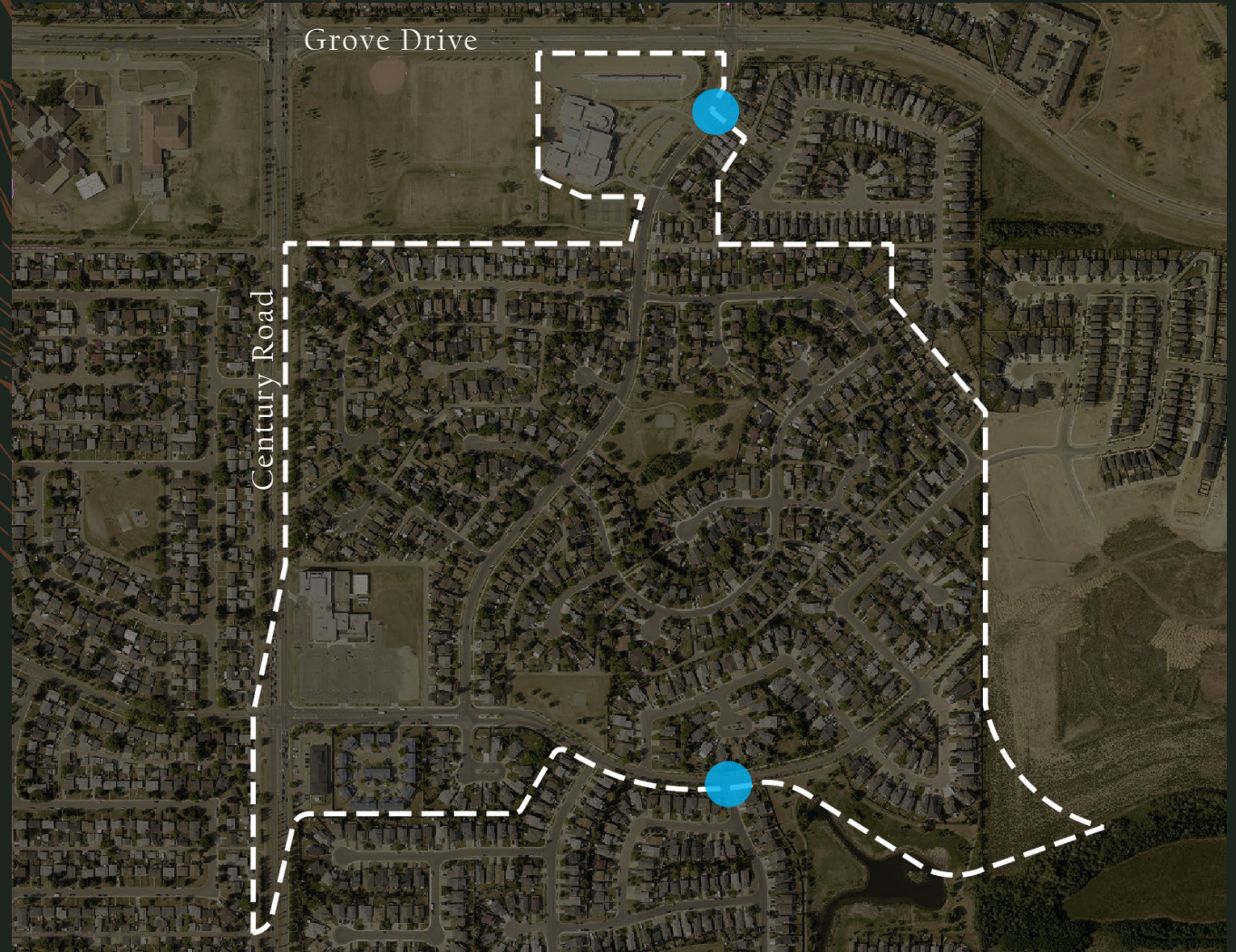
- Sidewalk
- Curb & Gutter
- Para-ramps

Catch Basin Repairs



Pressure Reducing Valves (PRV)

Installation is to create a new pressure zone for the neighborhood. The PRVs would isolate the area that would allow us to increase the pressure on Grove Meadows without affecting other neighborhoods.



Mohr Avenue

Full Depth Recycling (pulverization)

Mill and Overlay

Concrete Replacement

- Sidewalk
- Curb & Gutter
- Para-ramps

Catch Basin Repairs



First Avenue Lane

Remove and replace existing sanitary main

Remove and replace existing water main

Install new pavement



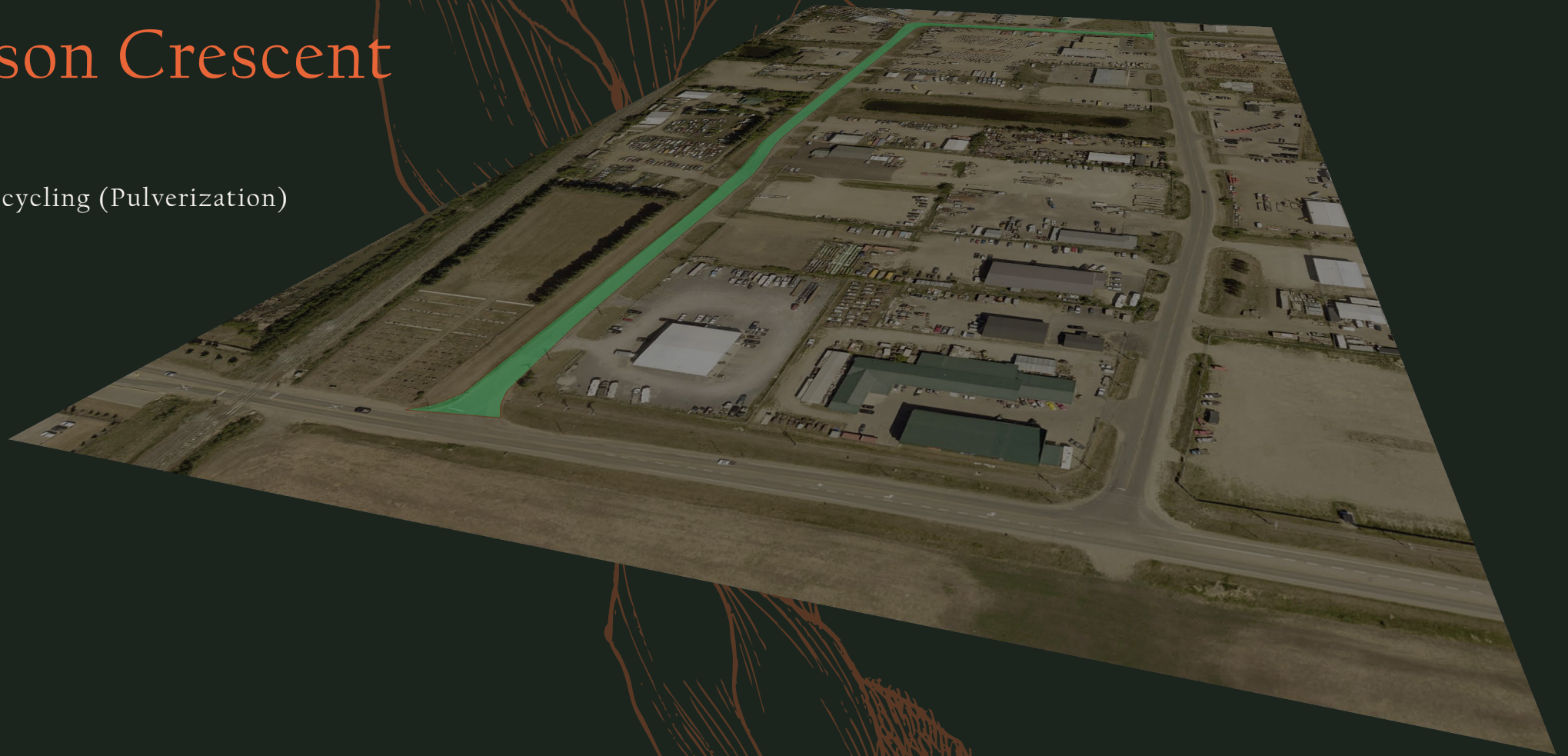
Madison Crescent

Full Depth Recycling (Pulverization)



Madison Crescent

Full Depth Recycling (Pulverization)



Madison Crescent

Full Depth Recycling (Pulverization)



Boundary Road

New Improvement



Thank you

Trevor Crawford, C.E.T.

Manager of Capital Projects

780 - 962 - 7620

trcarwford@sprucegrove.org

**UNDER
CONSTRUCTION**

COMING SOON

